

K'ERA MORGAN



GEOGLYPHS: NOTES FROM THE INTERIOR

Opening celebration: November 16th, 5-7pm
642 N Western Avenue, Los Angeles

UNREPD is pleased to present K'era Morgan's debut solo exhibition, *Geoglyphs: Notes from the Interior*. Featuring 12 abstract, mixed media paintings, this exhibition traces Morgan's journey from womanhood to motherhood, as a black woman, through aerial views of her previously uncharted internal landscapes.

Morgan's artistic practice is based largely in the exploration of connections between the natural world and the human psyche. *Geoglyphs: Notes from the Interior* is based on a collection of drawings that Morgan made during a pivotal, transitional phase in her life. After suffering a debilitating back injury, Morgan was unable to work, walk, sleep, or fall into her new role as a mother. To face these challenges, Morgan turned to sketching and discovered new psychological terrain. The paintings that resulted chart the landscapes of Morgan's deepest being.

Navigating these interior spaces through their aerial views gives a holistic perspective, including all the inaccessible nooks and crannies of the mind. As aerial surveys of vast areas, the paintings map depths of emotion and sensation. The intensity of physical pain serves as the baseline, yet is layered with the corresponding intensity of mother-love and overwhelm, resulting in vivid colors and vibrant pathways woven among organic shapes and linework. Effectively, Morgan maps the routes of feeling—both affective and somatic—that define her unconventional entry into motherhood.



A native Californian, K'era Morgan is a Los Angeles-based artist who explores the art of abstraction in the form of collage and painting and holds a BFA from The School of the Art Institute of Chicago. Morgan's artwork has been showcased in numerous group exhibitions across the U.S. and is featured in private collections throughout North America, as well as the Samsung Frame Art Store. Morgan has collaborated with prominent brands such as All Modern, Revival Rugs, and West Elm, and was named one of Dwell Magazine's Emerging Designers to Watch in 2021. She is a member of the Female Design Council and one of 68 women entrepreneurs featured in the recently-released Hachette Book Group publication, *Mother/Founder* by Amanda Jane Jones. Balancing her roles as an artist, mother, and life partner, Morgan continuously seeks out ways to expand her visual language through workshops, residencies, and creative collaborations with fellow artists.



Geoglyph 11.30

2024

Mixed media on canvas

31 x 54.5 inches

\$4500



Geoglyph 10.16

2024

Mixed media on canvas

60 x 78 inches

\$11,000



Geoglyph 10.4

2024

Mixed media on canvas

60 x 42.5 inches

\$6100



Geoglyph 9.2

2024

Mixed media on canvas

59.5 x 39.5 inches

\$5650



Geoglyph 8.14

2024

Mixed media on canvas

59 x 42 inches

\$6000



Geoglyph 7.14

2024

Mixed media on canvas

31 x 54 inches

\$4500



Geoglyph 4.5

2024

Mixed media on canvas

49 x 32 inches

\$4000



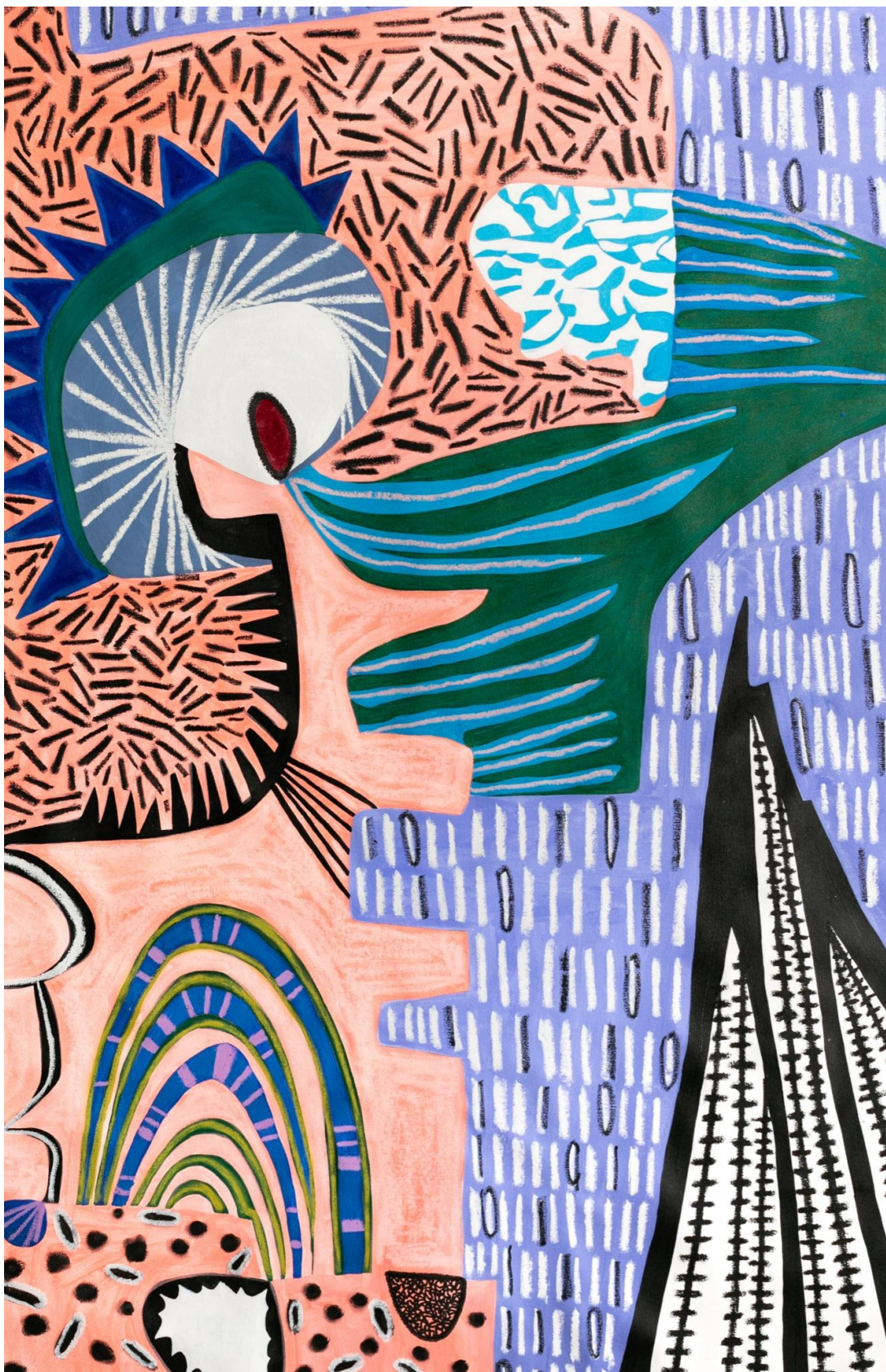
Geoglyph 1.3

2024

Mixed media on canvas

43 x 60 inches

\$6500



Geoglyph 3.14

2024

Mixed media on canvas

49 x 30 inches

\$4000



Geoglyph 5.12

2024

Mixed media on canvas

59 x 42 inches

\$5950



Geoglyph 11.16

2024

Mixed media on canvas

43 x 28 inches

\$3500



Geoglyph 6.20

Mixed media on canvas

68 x 44 inches

\$7200



hello@unrepd.com

unrepd.com | [@unrepd](https://www.instagram.com/unrepd)
642 N Western Avenue, Los Angeles, CA 90004