

# RECYCLING PERFORMANCE PLASTICS: BEST PRACTICES

## Why invest in a recycling program at your location?



**Financial Benefit:** The scrap you produce has value. Demand is increasing and supply is limited. Plus, recycling reduces landfill costs.



**Support Customer Initiatives:** Meet your customers' sustainability goals, branding requirements and growth in a changing market.



**Environmental Impact:** Contributes to a circular economy, sustainability and the greater good.



**Branding:** Promote the value of your recycling program in your community and to the industry.



**Risk Mitigation:** If we aren't recycling, there's a greater chance that the government will demand it via legislation and regulation. This will impact the bottom line.

*And ... it's the right thing to do!*

## High-level goals include:



Meet growing customer and market requirements.



Create a net-positive financial impact by attracting new business opportunities.



Promote your program in the marketplace to improve your brand and generate goodwill.



Cost reduction potential.

## How to begin recycling or improve your program:

- 1 Identify the most common polymers going into your dumpster.
- 2 Focus on the lowest hanging fruit: largest polymers by volume first.
- 3 Find local recyclers for those polymers. [online tool coming soon!]
- 4 Define how to measure your goals (KPIs).

### For example:

- ✓ Recycle 80% of your top 5 polymers.
- ✓ Reduce landfill costs by 75%.
- ✓ Create your own goals — this is your program to measure!

### PRO TIP

- Get your company managers engaged!
- Your leadership must lead by example and embrace the program.

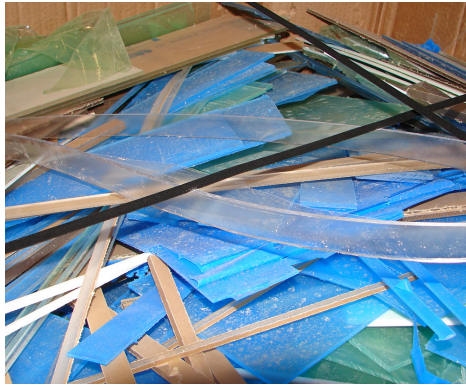
## 5

Establish a dedicated collection space.

- **Critical for success:** Effective polymer segregation and contamination control
- **Make it obvious:** Use an organized, clean, well-lit location with good signage.
- **Storage:** Your recyclers will help identify which polymers can be stored outside vs. inside and the volume requirements for pickup.

## WHY DOES THIS MATTER?

- Foreign materials can damage processing equipment.
- Cross-contamination devalues the product.



## 6

Ask your recycler or manufacturer about collection requirements.

- Masked or demasked
- Printed or unprinted
- Maximize package density
- Labeling
- Collection supplies (gaylords, totes, pallets, etc.)



## PRO TIPS

- Keep polymers stored inside your facility away from saws, routers and truck dock doors to avoid cross-contamination.
- Create a wheeled pallet as a dolly to move gaylords easily, allowing them to be placed where needed for collection, then returned to the segregation area. No forklift needed!

## 7

Train your team on recycling ... and why it matters!



- **Educate** your team about the program's value to gain their buy-in.
- **Identify** polymers for recycling. Avoid commingling similar materials, such as PC, PETG and acrylic.
- **Segregate** materials based on your recycler's requirements.
- **Financial** benefits of properly segregating materials.
- Detail the **risks** associated with contamination.

*Remind your team that recycling bins are not trash cans!*

## 8

Minimize freight expense

- Discuss costs with your recycler.
- Maximize the value of your return.
- See if you qualify for prepaid freight.

## 9

Label clearly

- Be sure the label is visible and easy to read — printed is better than handwritten.
- Include a packing list. Itemize and track this information.

Number your pallets and gaylords to correspond with a master packing list.

The total package weight.

**OUTBOUND**

**Product Type:** \_\_\_\_\_

**Box #** \_\_\_\_\_

**Gross Weight** \_\_\_\_\_

**Date** \_\_\_\_\_

**Net Weight** \_\_\_\_\_

**Your Company Name**  
**Address**  
**Contact Information**

Be specific! For example, if recycling clear acrylic sheet define cast, continuous cast or extruded.

List color(s).

The weight of polymer being returned without packaging.

## What if you don't have a local recycler?

- If your company has multiple branch locations:
  - Negotiate pick-ups between locations with your recycler.
  - Use internal transfers to aggregate material in a centralized location.
- Explore other options when recycling is not possible, such as Waste-to-Energy. [online tool coming soon!]
  - Comingled materials
  - Contaminated materials
- If creating larger drops, sell those drops to fabricators creating smaller parts or inventory for future jobs.

## PRO TIPS

- Cut larger shapes and stack flat to increase package density and scrap value.
- Put a top on your gaylord to allow double stacking in the truck.
- Limit pallets to standard sizes to avoid surcharges.
- Use a bailer to compress lightweight/hollow materials and films.
- Program your router for exit cuts that minimize skeleton/trim size.
- When working with a manufacturer, ask about backhauls when receiving regular inventory to minimize freight costs.

Questions on definitions and vocabulary? Scan the QR code below

